

MIX IT UP!

With Single Stream recycling, you don't have to separate paper and containers.



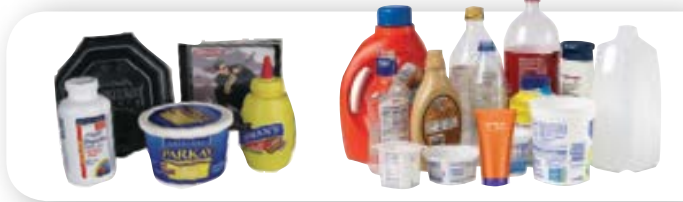
ALL

- Newspapers and inserts
- Magazines and catalogs
- Clean cardboard (*flatten not to exceed 2 x 4 feet*)
- Pizza boxes (*clean & empty*)
- Paper food boxes: cereal, cracker, pasta, etc. (*flatten*)
- All books
- Junk mail & office paper



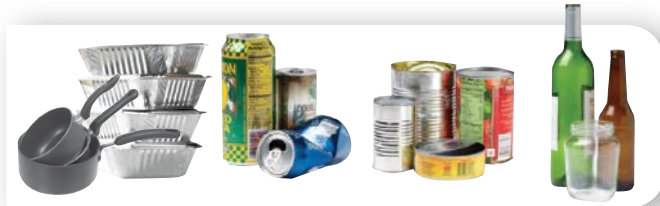
TOGETHER

- Gable-top cartons & drink boxes
- Clean, empty plastic #s 1 – 7 (*caps attached*)



NOW

- Metal cookware & foil-ware
- Clean, empty metal cans
- Glass bottles and jars



Visit monroecounty.gov for more information

Don't Trash Our Future!
Recycle Right.

DO NOT PUT IN THE BIN

- Food or Liquid Waste
- Styrofoam*
- Plastic Bags*
- Rx Bottles*
- Sharps/Syringes*
- Cords/Hoses
- Clothing*



*Find out more at monroecounty.gov/ecopark

Q | Where can I get a new/replacement recycling container?
 A | Contact your waste collection provider. Containers may be purchased at home improvement stores but always check with your recycling collector first to ensure program compatibility.

Q | Should I separate my recyclables using plastic bags?
 A | No. Plastic bags, cords, ropes, etc. wrap around recycling machinery causing facility downtime and also contaminate recyclable paper. Plastic bags and product wrapping may be recycled at most large retail outlets.

Q | Can I recycle caps and lids from containers?
 A | Yes. After rinsing, caps and lids should be reattached.

Q | Can Styrofoam egg cartons, coffee cups, and packing material with a #4 or #6 on it be recycled?
 A | Expanded plastics (trade name Styrofoam) cannot be placed in recycling bins regardless of number. The ecopark will accept some of this material. Visit monroecounty.gov/ecopark for more information.

Q | Can I place small electronics in my recycling bin or TVs and the like at the curb?
 A | Electronics are generally not accepted curbside. Visit monroecounty.gov/ecopark for more information. Large metal appliances can be recycled by calling your waste collection provider.

Q | Can I shred personal information before recycling?
 A | Yes. The ecopark offers household shredding service and also accepts shredded paper for recycling.

Q | Should I place my recyclables at the curb on very windy days or if a storm is forecast?
 A | Recyclables that blow around the neighborhood are litter. Use your good judgment on whether to delay your recycling.



MORE QUESTIONS?

Call your waste collection provider or email mcdes@monroecounty.gov



Program sponsored, in part, by New York State Department of Environmental Conservation and Waste Management, Inc.



Printed on Recycled Paper

