



VOTER TURNOUT SUMMARY REPORT 2023 PRIMARY ELECTION

Monroe County Board of Elections
39 W Main Street, Rochester NY 14614

July 19, 2023

Jackie Ortiz
Commissioner of Elections

Lisa P Nicolay
Commissioner of Elections



**2023 Primary Election
Turnout by Age
Part 1 of 2**



	No Date of Birth			18-24			25-34			35-44		
	Voted	Registered	Turnout	Voted	Registered	Turnout	Voted	Registered	Turnout	Voted	Registered	Turnout
Legislative District 16	0	0	0.0%	0	0	0.0%	0	0	0.0%	0	0	0.0%
Legislative District 17	0	1	0.0%	23	150	15.3%	101	768	13.2%	211	802	26.3%
Legislative District 21	0	3	0.0%	36	531	6.8%	74	1,413	5.2%	112	1,492	7.5%
Legislative District 22	0	4	0.0%	15	462	3.2%	44	1,346	3.3%	62	1,338	4.6%
Legislative District 23	0	2	0.0%	73	442	16.5%	280	2,698	10.4%	330	1,601	20.6%
Legislative District 24	0	3	0.0%	28	207	13.5%	121	1,143	10.6%	147	801	18.4%
Legislative District 25	1	6	16.7%	17	531	3.2%	87	1,381	6.3%	94	1,220	7.7%
Legislative District 26	0	2	0.0%	7	274	2.6%	23	906	2.5%	64	992	6.5%
Legislative District 27	0	4	0.0%	19	550	3.5%	82	1,437	5.7%	144	1,478	9.7%
Legislative District 28	0	3	0.0%	5	482	1.0%	26	1,179	2.2%	27	1,200	2.3%
Legislative District 29	0	0	0.0%	27	528	5.1%	39	1,277	3.1%	67	1,391	4.8%
CITY Total	1	28	3.6%	250	4,157	6.0%	877	13,548	6.5%	1,258	12,315	10.2%
Brighton	0	0	0.0%	118	1,031	11.4%	186	2,118	8.8%	369	2,136	17.3%
Chili	0	0	0.0%	0	5	0.0%	1	15	6.7%	1	12	8.3%
Clarkson	0	0	0.0%	0	2	0.0%	0	2	0.0%	0	3	0.0%
East Rochester	0	0	0.0%	0	1	0.0%	0	1	0.0%	0	4	0.0%
Gates	0	6	0.0%	9	321	2.8%	27	823	3.3%	40	850	4.7%
Greece	0	1	0.0%	3	50	6.0%	3	105	2.9%	12	166	7.2%
Hamlin	0	0	0.0%	0	3	0.0%	0	3	0.0%	0	5	0.0%
Henrietta	0	0	0.0%	2	7	28.6%	1	14	7.1%	0	19	0.0%
Irondequoit	0	4	0.0%	14	328	4.3%	55	1,081	5.1%	100	1,100	9.1%
Mendon	0	0	0.0%	0	0	0.0%	0	2	0.0%	1	5	20.0%
Ogden	0	0	0.0%	0	1	0.0%	0	4	0.0%	0	10	0.0%
Parma	0	0	0.0%	0	0	0.0%	0	2	0.0%	0	12	0.0%
Penfield	0	20	0.0%	31	465	6.7%	19	940	2.0%	51	1,130	4.5%
Perinton	0	0	0.0%	7	9	77.8%	4	11	36.4%	7	16	43.8%
Pittsford	0	0	0.0%	3	9	33.3%	1	2	50.0%	5	7	71.4%
Riga	0	0	0.0%	0	0	0.0%	2	2	100.0%	0	3	0.0%
Rush	1	2	50.0%	3	99	3.0%	9	212	4.2%	21	250	8.4%
Sweden	0	0	0.0%	1	4	25.0%	0	2	0.0%	0	6	0.0%
Webster	0	0	0.0%	0	5	0.0%	1	3	33.3%	0	16	0.0%
Wheatland	0	2	0.0%	5	58	8.6%	13	174	7.5%	25	184	13.6%
TOWNS Total	1	35	2.9%	196	2,398	8.2%	322	5,516	5.8%	632	5,934	10.7%
GRAND Total	2	63	3.2%	446	6,555	6.8%	1,199	19,064	6.3%	1,890	18,249	10.4%



**2023 Primary Election
Turnout by Age
Part 2 of 2**



	45-54			55-64			65 +		
	Voted	Registered	Turnout	Voted	Registered	Turnout	Voted	Registered	Turnout
Legislative District 16	0	0	0.0%	0	2	0.0%	0	4	0.0%
Legislative District 17	152	534	28.5%	186	572	32.5%	434	888	48.9%
Legislative District 21	128	1,321	9.7%	205	1,467	14.0%	387	1,628	23.8%
Legislative District 22	84	1,199	7.0%	157	1,422	11.0%	379	1,745	21.7%
Legislative District 23	205	940	21.8%	342	1,125	30.4%	936	2,047	45.7%
Legislative District 24	89	505	17.6%	149	565	26.4%	374	888	42.1%
Legislative District 25	71	1,013	7.0%	196	1,399	14.0%	450	1,873	24.0%
Legislative District 26	69	822	8.4%	110	869	12.7%	265	1,211	21.9%
Legislative District 27	144	1,247	11.5%	267	1,421	18.8%	574	1,862	30.8%
Legislative District 28	58	1,112	5.2%	96	1,220	7.9%	220	1,400	15.7%
Legislative District 29	102	1,313	7.8%	200	1,458	13.7%	442	1,830	24.2%
CITY Total	1,102	10,006	11.0%	1,908	11,520	16.6%	4,461	15,376	29.0%
Brighton	445	1,824	24.4%	539	1,801	29.9%	1,494	3,774	39.6%
Chili	3	16	18.8%	2	12	16.7%	6	15	40.0%
Clarkson	0	5	0.0%	0	5	0.0%	2	4	50.0%
East Rochester	0	1	0.0%	1	4	25.0%	0	1	0.0%
Gates	57	826	6.9%	196	1,330	14.7%	592	2,331	25.4%
Greece	6	139	4.3%	25	182	13.7%	84	470	17.9%
Hamlin	0	3	0.0%	1	9	11.1%	1	3	33.3%
Henrietta	2	19	10.5%	2	16	12.5%	3	10	30.0%
Irondequoit	95	889	10.7%	119	940	12.7%	347	1,655	21.0%
Mendon	0	3	0.0%	0	0	0.0%	1	2	50.0%
Ogden	2	13	15.4%	0	10	0.0%	0	3	0.0%
Parma	0	14	0.0%	1	10	10.0%	1	8	12.5%
Penfield	143	1,360	10.5%	250	1,916	13.0%	690	3,132	22.0%
Perinton	6	19	31.6%	6	13	46.2%	10	14	71.4%
Pittsford	1	4	25.0%	7	11	63.6%	4	6	66.7%
Riga	0	3	0.0%	0	3	0.0%	0	2	0.0%
Rush	20	214	9.3%	75	426	17.6%	201	661	30.4%
Sweden	1	12	8.3%	0	3	0.0%	0	2	0.0%
Webster	2	21	9.5%	3	19	15.8%	2	18	11.1%
Wheatland	20	160	12.5%	66	250	26.4%	152	416	36.5%
TOWNS Total	803	5,545	14.5%	1,293	6,960	18.6%	3,590	12,527	28.7%
GRAND Total	1,905	15,551	12.3%	3,201	18,480	17.3%	8,051	27,903	28.9%



2023 Primary Election Turnout by Gender



	Total Voters			Males			Females			Undeclared		
	Voted	Registered	Turnout	Voted	Registered	Turnout	Voted	Registered	Turnout	Voted	Registered	Turnout
Legislative District 16	0	6	0.0%	0	2	0.0%	0	4	0.0%	0	0	0.0%
Legislative District 17	1,107	3,715	29.8%	458	1,545	29.6%	648	2,169	29.9%	1	1	100.0%
Legislative District 21	942	7,855	12.0%	352	3,162	11.1%	590	4,677	12.6%	0	16	0.0%
Legislative District 22	741	7,516	9.9%	292	3,087	9.5%	445	4,403	10.1%	4	26	15.4%
Legislative District 23	2,166	8,855	24.5%	1,017	3,995	25.5%	1,145	4,836	23.7%	4	24	16.7%
Legislative District 24	908	4,112	22.1%	403	1,787	22.6%	504	2,305	21.9%	1	20	5.0%
Legislative District 25	916	7,423	12.3%	337	3,075	11.0%	579	4,318	13.4%	0	30	0.0%
Legislative District 26	538	5,076	10.6%	205	1,982	10.3%	333	3,085	10.8%	0	9	0.0%
Legislative District 27	1,230	7,999	15.4%	414	3,142	13.2%	814	4,845	16.8%	2	12	16.7%
Legislative District 28	432	6,596	6.5%	166	2,649	6.3%	265	3,931	6.7%	1	16	6.3%
Legislative District 29	877	7,797	11.2%	318	3,074	10.3%	557	4,695	11.9%	2	28	7.1%
CITY Total	9,857	66,950	14.7%	3,962	27,500	14.4%	5,880	39,268	15.0%	15	182	8.2%
Brighton	3,151	12,684	24.8%	1,260	4,964	25.4%	1,888	7,695	24.5%	3	25	12.0%
Chili	13	75	17.3%	9	46	19.6%	4	29	13.8%	0	0	0.0%
Clarkson	2	21	9.5%	1	8	12.5%	1	13	7.7%	0	0	0.0%
East Rochester	1	12	8.3%	0	3	0.0%	1	9	11.1%	0	0	0.0%
Gates	921	6,487	14.2%	473	3,115	15.2%	448	3,366	13.3%	0	6	0.0%
Greece	133	1,113	11.9%	64	513	12.5%	69	600	11.5%	0	0	0.0%
Hamlin	2	26	7.7%	2	12	16.7%	0	14	0.0%	0	0	0.0%
Henrietta	10	85	11.8%	7	39	17.9%	3	46	6.5%	0	0	0.0%
Irondequoit	730	5,997	12.2%	287	2,228	12.9%	443	3,766	11.8%	0	3	0.0%
Mendon	2	12	16.7%	1	6	16.7%	1	6	16.7%	0	0	0.0%
Ogden	2	41	4.9%	1	21	4.8%	1	20	5.0%	0	0	0.0%
Parma	2	46	4.3%	1	27	3.7%	1	19	5.3%	0	0	0.0%
Penfield	1,184	8,963	13.2%	637	4,698	13.6%	546	4,256	12.8%	1	9	11.1%
Perinton	40	82	48.8%	19	31	61.3%	21	51	41.2%	0	0	0.0%
Pittsford	21	39	53.8%	15	28	53.6%	6	11	54.5%	0	0	0.0%
Riga	2	13	15.4%	1	4	25.0%	0	8	0.0%	1	1	100.0%
Rush	330	1,864	17.7%	156	863	18.1%	174	1,000	17.4%	0	1	0.0%
Sweden	2	29	6.9%	1	15	6.7%	1	14	7.1%	0	0	0.0%
Webster	8	82	9.8%	4	40	10.0%	4	42	9.5%	0	0	0.0%
Wheatland	281	1,244	22.6%	161	656	24.5%	120	588	20.4%	0	0	0.0%
TOWNS Total	6,837	38,915	17.6%	3,100	17,317	17.9%	3,732	21,553	17.3%	5	45	11.1%
GRAND Total	16,694	105,865	15.8%	7,062	44,817	15.8%	9,612	60,821	15.8%	20	227	8.8%



**2023 Primary Election
Democratic Turnout by Age
Part 1 of 2**



	No Date of Birth			18-24			25-34			35-44		
	Voted	Registered	Turnout	Voted	Registered	Turnout	Voted	Registered	Turnout	Voted	Registered	Turnout
Legislative District 16	0	0	0.0%	0	0	0.0%	0	0	0.0%	0	0	0.0%
Legislative District 17	0	1	0.0%	23	150	15.3%	100	761	13.1%	208	792	26.3%
Legislative District 21	0	3	0.0%	36	528	6.8%	73	1,394	5.2%	111	1,461	7.6%
Legislative District 22	0	4	0.0%	14	456	3.1%	43	1,325	3.2%	62	1,312	4.7%
Legislative District 23	0	2	0.0%	70	438	16.0%	274	2,673	10.3%	328	1,590	20.6%
Legislative District 24	0	3	0.0%	25	201	12.4%	113	1,127	10.0%	144	789	18.3%
Legislative District 25	1	6	16.7%	17	525	3.2%	87	1,370	6.4%	93	1,200	7.8%
Legislative District 26	0	2	0.0%	7	272	2.6%	23	896	2.6%	64	976	6.6%
Legislative District 27	0	4	0.0%	19	545	3.5%	81	1,428	5.7%	142	1,454	9.8%
Legislative District 28	0	3	0.0%	5	470	1.1%	26	1,158	2.2%	27	1,171	2.3%
Legislative District 29	0	0	0.0%	27	523	5.2%	39	1,262	3.1%	67	1,367	4.9%
CITY Total	1	28	3.6%	243	4,108	5.9%	859	13,394	6.4%	1,246	12,112	10.3%
Brighton	0	0	0.0%	116	1,020	11.4%	183	2,105	8.7%	366	2,123	17.2%
Gates	0	2	0.0%	0	109	0.0%	10	307	3.3%	10	314	3.2%
Irondequoit	0	4	0.0%	14	326	4.3%	52	1,055	4.9%	94	1,063	8.8%
Rush	0	0	0.0%	1	44	2.3%	3	107	2.8%	15	127	11.8%
TOWNS Total	0	6	0.0%	131	1,499	8.7%	248	3,574	6.9%	485	3,627	13.4%
GRAND Total	1	34	2.9%	374	5,607	6.7%	1,107	16,968	6.5%	1,731	15,739	11.0%



**2023 Primary Election
Democratic Turnout by Age
Part 2 of 2**



	45-54			55-64			65 +		
	Voted	Registered	Turnout	Voted	Registered	Turnout	Voted	Registered	Turnout
Legislative District 16	0	0	0.0%	0	2	0.0%	0	4	0.0%
Legislative District 17	152	531	28.6%	184	567	32.5%	434	885	49.0%
Legislative District 21	128	1,300	9.8%	205	1,456	14.1%	386	1,619	23.8%
Legislative District 22	82	1,175	7.0%	157	1,413	11.1%	378	1,739	21.7%
Legislative District 23	203	929	21.9%	341	1,119	30.5%	933	2,041	45.7%
Legislative District 24	88	501	17.6%	149	563	26.5%	374	886	42.2%
Legislative District 25	70	1,004	7.0%	195	1,387	14.1%	450	1,866	24.1%
Legislative District 26	68	810	8.4%	110	859	12.8%	263	1,205	21.8%
Legislative District 27	144	1,238	11.6%	267	1,418	18.8%	573	1,861	30.8%
Legislative District 28	58	1,094	5.3%	95	1,202	7.9%	219	1,387	15.8%
Legislative District 29	102	1,287	7.9%	200	1,442	13.9%	439	1,824	24.1%
CITY Total	1,095	9,869	11.1%	1,903	11,428	16.7%	4,449	15,317	29.0%
Brighton	442	1,810	24.4%	537	1,790	30.0%	1,491	3,763	39.6%
Gates	5	255	2.0%	36	333	10.8%	94	537	17.5%
Irondequoit	86	859	10.0%	115	914	12.6%	339	1,641	20.7%
Rush	11	91	12.1%	39	158	24.7%	108	272	39.7%
TOWNS Total	544	3,015	18.0%	727	3,195	22.8%	2,032	6,213	32.7%
GRAND Total	1,639	12,884	12.7%	2,630	14,623	18.0%	6,481	21,530	30.1%

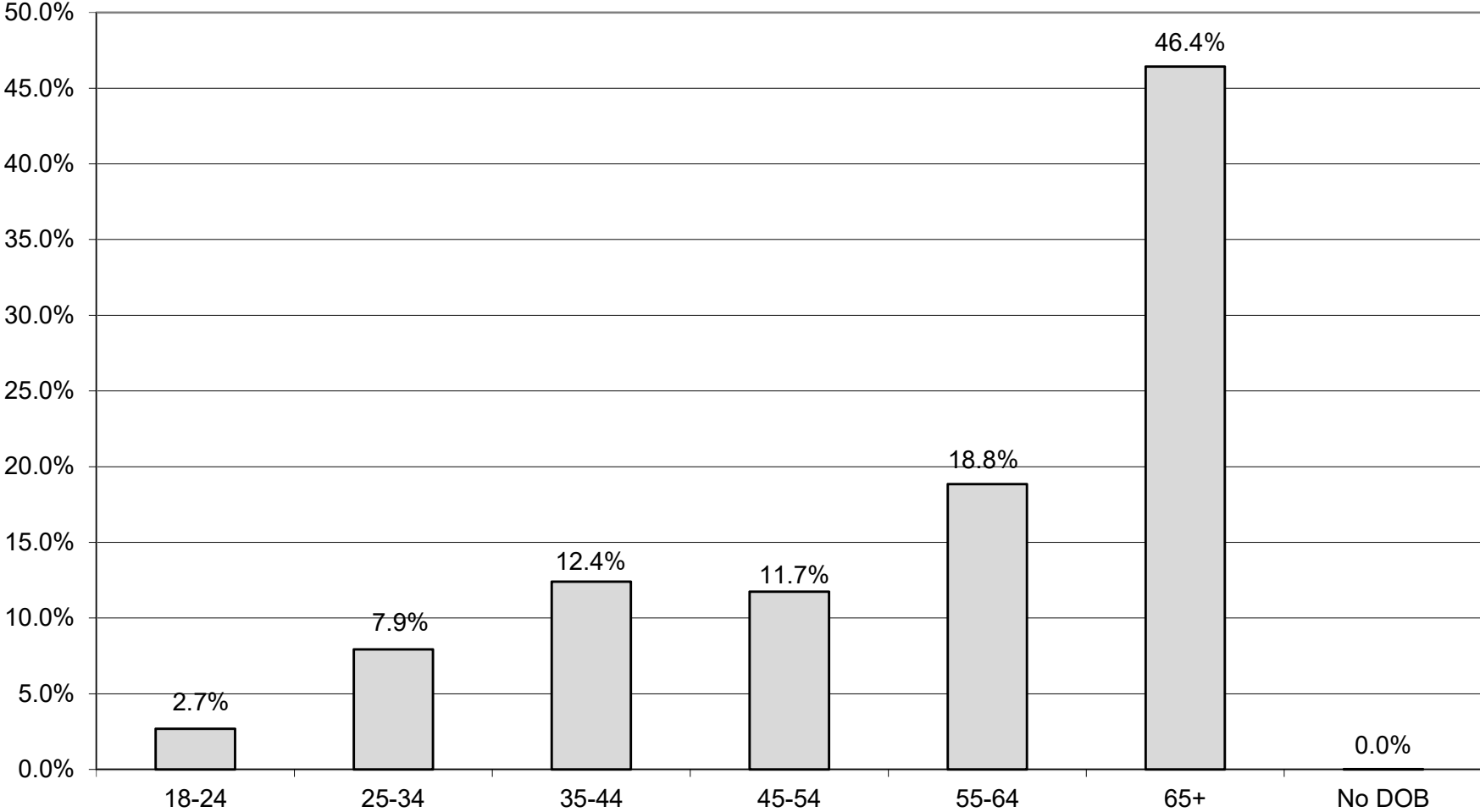


2023 Primary Election Democratic Turnout by Gender

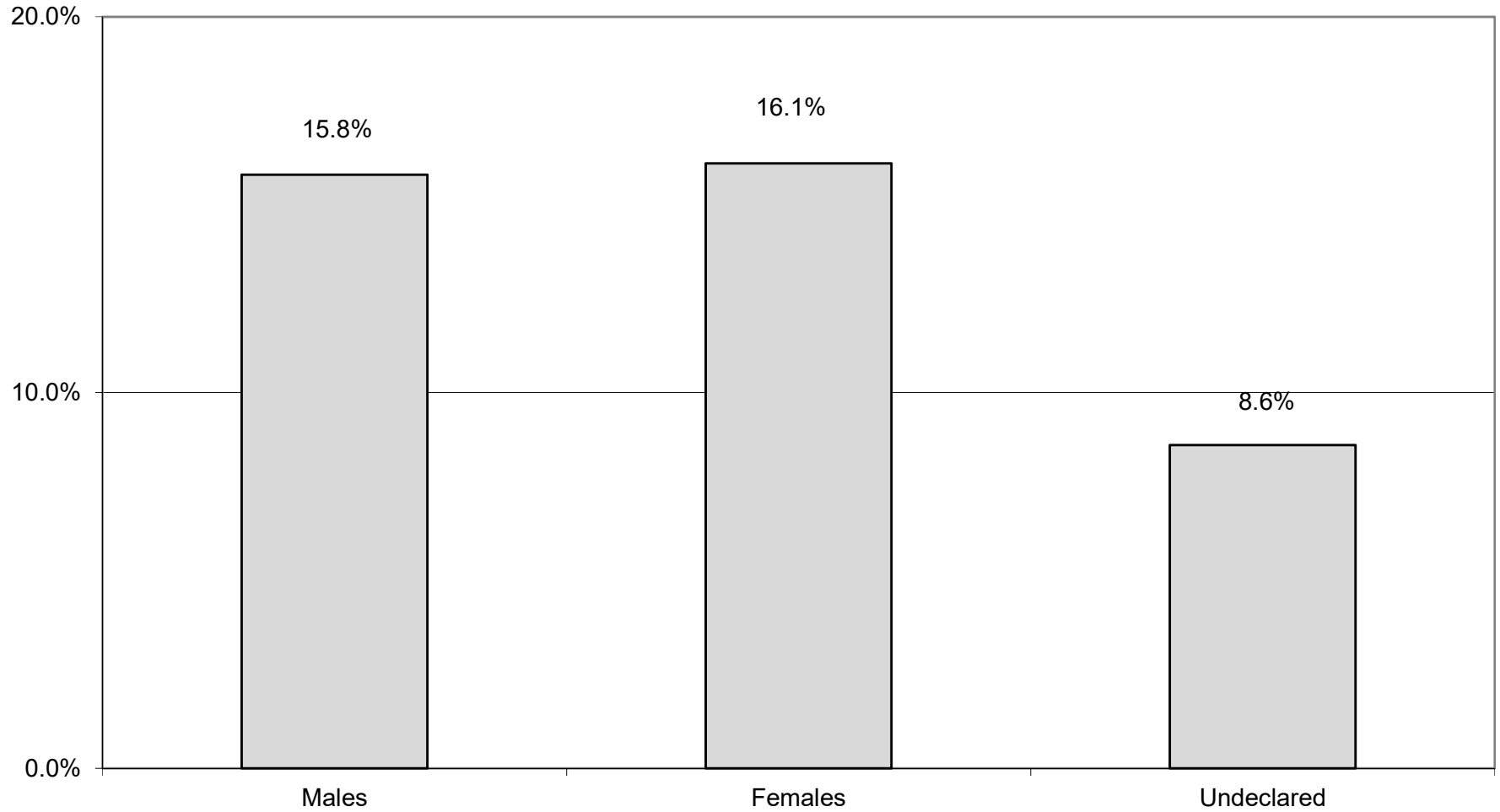


	Total Voters			Males			Females			Undeclared		
	Voted	Registered	Turnout	Voted	Registered	Turnout	Voted	Registered	Turnout	Voted	Registered	Turnout
Legislative District 16	0	6	0.0%	0	2	0.0%	0	4	0.0%	0	0	0.0%
Legislative District 17	1,101	3,687	29.9%	456	1,528	29.8%	644	2,158	29.8%	1	1	100.0%
Legislative District 21	939	7,761	12.1%	350	3,123	11.2%	589	4,622	12.7%	0	16	0.0%
Legislative District 22	736	7,424	9.9%	289	3,044	9.5%	443	4,355	10.2%	4	25	16.0%
Legislative District 23	2,149	8,792	24.4%	1,010	3,964	25.5%	1,135	4,805	23.6%	4	23	17.4%
Legislative District 24	893	4,070	21.9%	395	1,767	22.4%	497	2,283	21.8%	1	20	5.0%
Legislative District 25	913	7,358	12.4%	335	3,049	11.0%	578	4,279	13.5%	0	30	0.0%
Legislative District 26	535	5,020	10.7%	204	1,960	10.4%	331	3,051	10.8%	0	9	0.0%
Legislative District 27	1,226	7,948	15.4%	414	3,121	13.3%	810	4,815	16.8%	2	12	16.7%
Legislative District 28	430	6,485	6.6%	165	2,594	6.4%	264	3,875	6.8%	1	16	6.3%
Legislative District 29	874	7,705	11.3%	316	3,029	10.4%	556	4,648	12.0%	2	28	7.1%
CITY Total	9,796	66,256	14.8%	3,934	27,181	14.5%	5,847	38,895	15.0%	15	180	8.3%
Brighton	3,135	12,611	24.9%	1,248	4,929	25.3%	1,884	7,657	24.6%	3	25	12.0%
Gates	155	1,857	8.3%	62	718	8.6%	93	1,138	8.2%	0	1	0.0%
Irondequoit	700	5,862	11.9%	272	2,169	12.5%	428	3,690	11.6%	0	3	0.0%
Rush	177	799	22.2%	75	309	24.3%	102	490	20.8%	0	0	0.0%
TOWNS Total	4,167	21,129	19.7%	1,657	8,125	20.4%	2,507	12,975	19.3%	3	29	10.3%
GRAND Total	13,963	87,385	16.0%	5,591	35,306	15.8%	8,354	51,870	16.1%	18	209	8.6%

DEMOCRATIC TURNOUT BY AGE GROUP 2023 PRIMARY ELECTION



DEMOCRATIC TURNOUT - TOTAL AND GENDER 2023 PRIMARY ELECTION





2023 Primary Election
Republican Turnout by Age
Part 1 of 2



	No Date of Birth			18-24			25-34			35-44		
	Voted	Registered	Turnout	Voted	Registered	Turnout	Voted	Registered	Turnout	Voted	Registered	Turnout
Gates	0	4	0.0%	9	206	4.4%	17	503	3.4%	29	521	5.6%
Greece	0	1	0.0%	2	39	5.1%	2	67	3.0%	11	90	12.2%
Penfield	0	20	0.0%	31	464	6.7%	18	932	1.9%	51	1,112	4.6%
Rush	1	2	50.0%	2	55	3.6%	6	101	5.9%	6	119	5.0%
Wheatland	0	2	0.0%	5	57	8.8%	13	173	7.5%	25	181	13.8%
TOWNS Total	1	29	3.4%	49	821	6.0%	56	1,776	3.2%	122	2,023	6.0%
GRAND Total	1	29	3.4%	49	821	6.0%	56	1,776	3.2%	122	2,023	6.0%



2023 Primary Election
Republican Turnout by Age
Part 2 of 2



	45-54			55-64			65 +		
	Voted	Registered	Turnout	Voted	Registered	Turnout	Voted	Registered	Turnout
Gates	51	554	9.2%	157	976	16.1%	496	1,775	27.9%
Greece	4	85	4.7%	25	126	19.8%	78	433	18.0%
Penfield	143	1,348	10.6%	248	1,901	13.0%	687	3,117	22.0%
Rush	9	122	7.4%	36	266	13.5%	93	388	24.0%
Wheatland	20	159	12.6%	66	250	26.4%	152	415	36.6%
TOWNS Total	227	2,268	10.0%	532	3,519	15.1%	1,506	6,128	24.6%
GRAND Total	227	2,268	10.0%	532	3,519	15.1%	1,506	6,128	24.6%

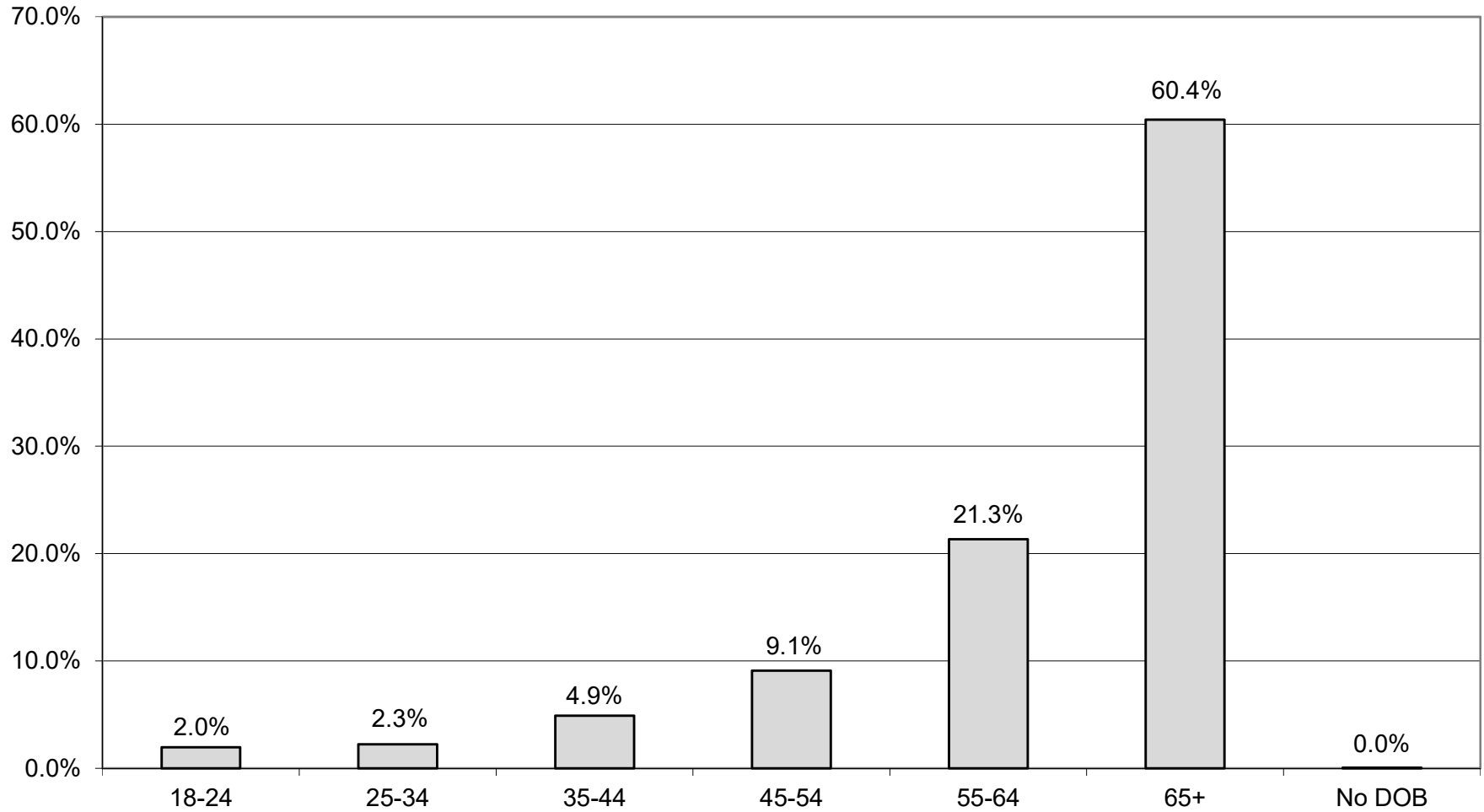


2023 Primary Election Republican Turnout by Gender

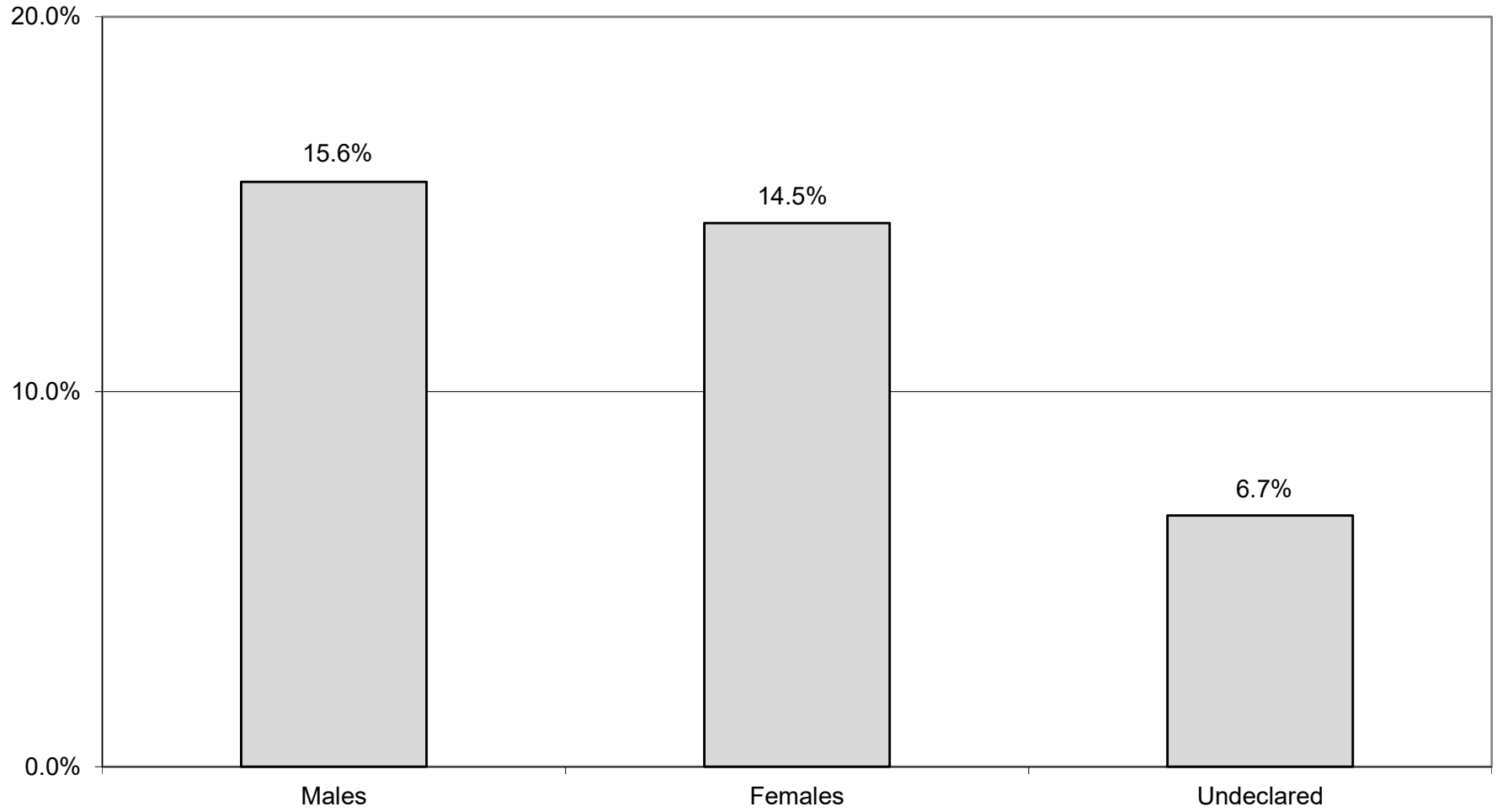


	Total Voters			Males			Females			Undeclared		
	Voted	Registered	Turnout	Voted	Registered	Turnout	Voted	Registered	Turnout	Voted	Registered	Turnout
Gates	759	4,539	16.7%	408	2,359	17.3%	351	2,175	16.1%	0	5	0.0%
Greece	122	841	14.5%	59	392	15.1%	63	449	14.0%	0	0	0.0%
Penfield	1,178	8,894	13.2%	633	4,672	13.5%	544	4,213	12.9%	1	9	11.1%
Rush	153	1,053	14.5%	81	549	14.8%	72	503	14.3%	0	1	0.0%
Wheatland	281	1,237	22.7%	161	655	24.6%	120	582	20.6%	0	0	0.0%
TOWNS Total	2,493	16,564	15.1%	1,342	8,627	15.6%	1,150	7,922	14.5%	1	15	6.7%
GRAND Total	2,493	16,564	15.1%	1,342	8,627	15.6%	1,150	7,922	14.5%	1	15	6.7%

REPUBLICAN TURNOUT BY AGE GROUP 2023 PRIMARY ELECTION



REPUBLICAN TURNOUT - TOTAL AND GENDER 2023 PRIMARY ELECTION





2023 Primary Election
Working Families Turnout by Age
 Part 1 of 2



	No Date of Birth			18-24			25-34			35-44		
	Voted	Registered	Turnout	Voted	Registered	Turnout	Voted	Registered	Turnout	Voted	Registered	Turnout
Legislative District 17	0	0	0.0%	0	0	0.0%	1	7	14.3%	3	10	30.0%
Legislative District 21	0	0	0.0%	0	3	0.0%	1	19	5.3%	1	31	3.2%
Legislative District 22	0	0	0.0%	1	6	16.7%	1	21	4.8%	0	26	0.0%
Legislative District 23	0	0	0.0%	3	4	75.0%	6	25	24.0%	2	11	18.2%
Legislative District 24	0	0	0.0%	3	6	50.0%	8	16	50.0%	3	12	25.0%
Legislative District 25	0	0	0.0%	0	6	0.0%	0	11	0.0%	1	20	5.0%
Legislative District 26	0	0	0.0%	0	2	0.0%	0	10	0.0%	0	16	0.0%
Legislative District 27	0	0	0.0%	0	5	0.0%	1	9	11.1%	2	24	8.3%
Legislative District 28	0	0	0.0%	0	12	0.0%	0	21	0.0%	0	29	0.0%
Legislative District 29	0	0	0.0%	0	5	0.0%	0	15	0.0%	0	24	0.0%
CITY Total	0	0	0.0%	7	49	14.3%	18	154	11.7%	12	203	5.9%
Brighton	0	0	0.0%	2	11	18.2%	3	13	23.1%	3	13	23.1%
Chili	0	0	0.0%	0	5	0.0%	1	15	6.7%	1	12	8.3%
Clarkson	0	0	0.0%	0	2	0.0%	0	2	0.0%	0	3	0.0%
East Rochester	0	0	0.0%	0	1	0.0%	0	1	0.0%	0	4	0.0%
Gates	0	0	0.0%	0	6	0.0%	0	13	0.0%	1	15	6.7%
Greece	0	0	0.0%	1	11	9.1%	1	38	2.6%	1	76	1.3%
Hamlin	0	0	0.0%	0	3	0.0%	0	3	0.0%	0	5	0.0%
Henrietta	0	0	0.0%	2	7	28.6%	1	14	7.1%	0	19	0.0%
Irondequoit	0	0	0.0%	0	2	0.0%	3	26	11.5%	6	37	16.2%
Mendon	0	0	0.0%	0	0	0.0%	0	2	0.0%	1	5	20.0%
Ogden	0	0	0.0%	0	1	0.0%	0	4	0.0%	0	10	0.0%
Parma	0	0	0.0%	0	0	0.0%	0	2	0.0%	0	12	0.0%
Penfield	0	0	0.0%	0	1	0.0%	1	8	12.5%	0	18	0.0%
Perinton	0	0	0.0%	7	9	77.8%	4	11	36.4%	7	16	43.8%
Pittsford	0	0	0.0%	3	9	33.3%	1	2	50.0%	5	7	71.4%
Riga	0	0	0.0%	0	0	0.0%	2	2	100.0%	0	3	0.0%
Rush	0	0	0.0%	0	0	0.0%	0	4	0.0%	0	4	0.0%
Sweden	0	0	0.0%	1	4	25.0%	0	2	0.0%	0	6	0.0%
Webster	0	0	0.0%	0	5	0.0%	1	3	33.3%	0	16	0.0%
Wheatland	0	0	0.0%	0	1	0.0%	0	1	0.0%	0	3	0.0%
TOWNS Total	0	0	0.0%	16	78	20.5%	18	166	10.8%	25	284	8.8%
GRAND Total	0	0	0.0%	23	127	18.1%	36	320	11.3%	37	487	7.6%



2023 Primary Election
Working Families Turnout by Age
 Part 2 of 2



	45-54			55-64			65 +		
	Voted	Registered	Turnout	Voted	Registered	Turnout	Voted	Registered	Turnout
Legislative District 17	0	3	0.0%	2	5	40.0%	0	3	0.0%
Legislative District 21	0	21	0.0%	0	11	0.0%	1	9	11.1%
Legislative District 22	2	24	8.3%	0	9	0.0%	1	6	16.7%
Legislative District 23	2	11	18.2%	1	6	16.7%	3	6	50.0%
Legislative District 24	1	4	25.0%	0	2	0.0%	0	2	0.0%
Legislative District 25	1	9	11.1%	1	12	8.3%	0	7	0.0%
Legislative District 26	1	12	8.3%	0	10	0.0%	2	6	33.3%
Legislative District 27	0	9	0.0%	0	3	0.0%	1	1	100.0%
Legislative District 28	0	18	0.0%	1	18	5.6%	1	13	7.7%
Legislative District 29	0	26	0.0%	0	16	0.0%	3	6	50.0%
CITY Total	7	137	5.1%	5	92	5.4%	12	59	20.3%
Brighton	3	14	21.4%	2	11	18.2%	3	11	27.3%
Chili	3	16	18.8%	2	12	16.7%	6	15	40.0%
Clarkson	0	5	0.0%	0	5	0.0%	2	4	50.0%
East Rochester	0	1	0.0%	1	4	25.0%	0	1	0.0%
Gates	1	17	5.9%	3	21	14.3%	2	19	10.5%
Greece	2	54	3.7%	0	56	0.0%	6	37	16.2%
Hamlin	0	3	0.0%	1	9	11.1%	1	3	33.3%
Henrietta	2	19	10.5%	2	16	12.5%	3	10	30.0%
Irondequoit	9	30	30.0%	4	26	15.4%	8	14	57.1%
Mendon	0	3	0.0%	0	0	0.0%	1	2	50.0%
Ogden	2	13	15.4%	0	10	0.0%	0	3	0.0%
Parma	0	14	0.0%	1	10	10.0%	1	8	12.5%
Penfield	0	12	0.0%	2	15	13.3%	3	15	20.0%
Perinton	6	19	31.6%	6	13	46.2%	10	14	71.4%
Pittsford	1	4	25.0%	7	11	63.6%	4	6	66.7%
Riga	0	3	0.0%	0	3	0.0%	0	2	0.0%
Rush	0	1	0.0%	0	2	0.0%	0	1	0.0%
Sweden	1	12	8.3%	0	3	0.0%	0	2	0.0%
Webster	2	21	9.5%	3	19	15.8%	2	18	11.1%
Wheatland	0	1	0.0%	0	0	0.0%	0	1	0.0%
TOWNS Total	32	262	12.2%	34	246	13.8%	52	186	28.0%
GRAND Total	39	399	9.8%	39	338	11.5%	64	245	26.1%

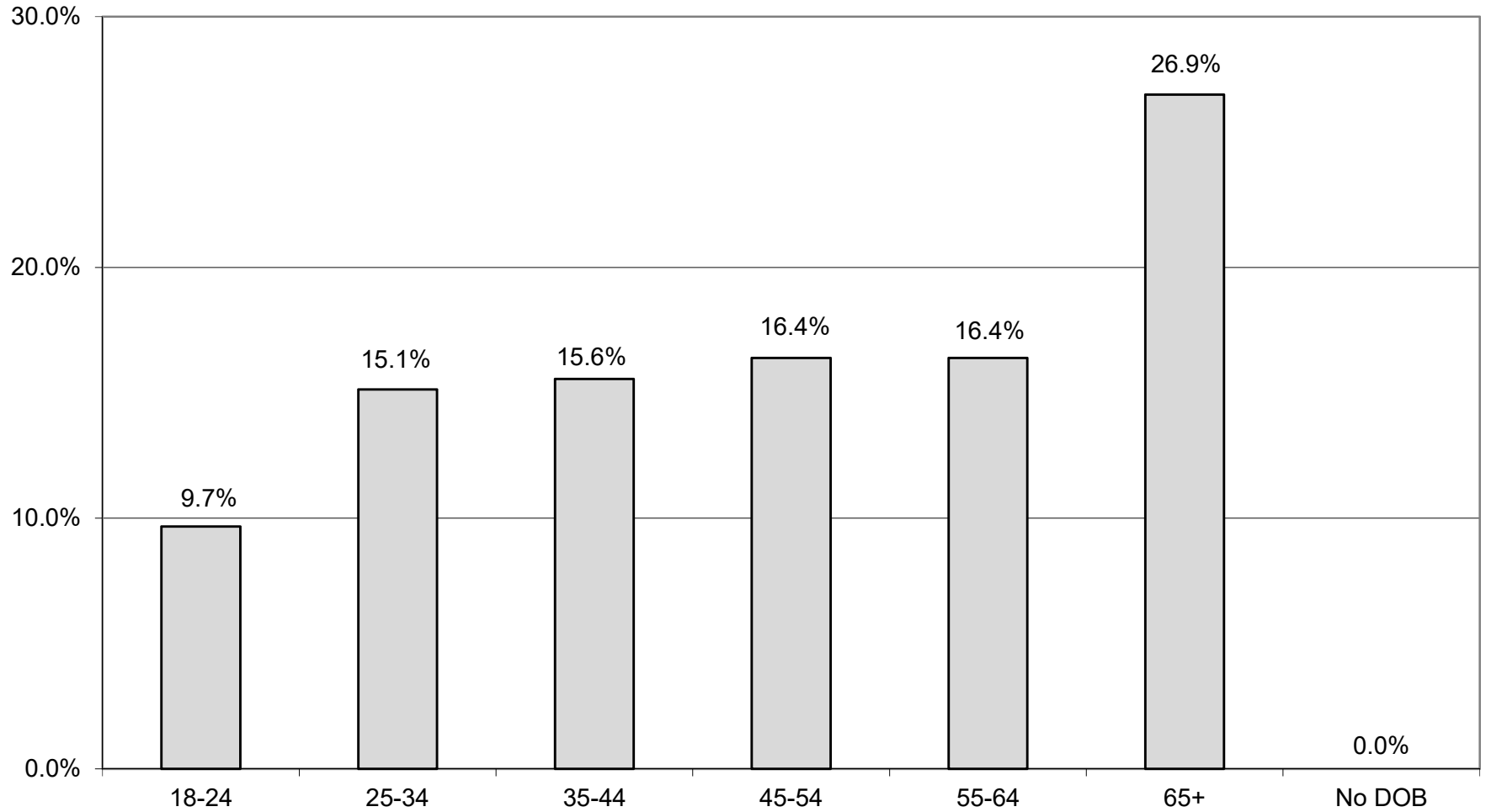


2023 Primary Election Working Families Turnout by Gender



	Total Voters			Males			Females			Undeclared		
	Voted	Registered	Turnout	Voted	Registered	Turnout	Voted	Registered	Turnout	Voted	Registered	Turnout
Legislative District 17	6	28	21.4%	2	17	11.8%	4	11	36.4%	0	0	0.0%
Legislative District 21	3	94	3.2%	2	39	5.1%	1	55	1.8%	0	0	0.0%
Legislative District 22	5	92	5.4%	3	43	7.0%	2	48	4.2%	0	1	0.0%
Legislative District 23	17	63	27.0%	7	31	22.6%	10	31	32.3%	0	1	0.0%
Legislative District 24	15	42	35.7%	8	20	40.0%	7	22	31.8%	0	0	0.0%
Legislative District 25	3	65	4.6%	2	26	7.7%	1	39	2.6%	0	0	0.0%
Legislative District 26	3	56	5.4%	1	22	4.5%	2	34	5.9%	0	0	0.0%
Legislative District 27	4	51	7.8%	0	21	0.0%	4	30	13.3%	0	0	0.0%
Legislative District 28	2	111	1.8%	1	55	1.8%	1	56	1.8%	0	0	0.0%
Legislative District 29	3	92	3.3%	2	45	4.4%	1	47	2.1%	0	0	0.0%
CITY Total	61	694	8.8%	28	319	8.8%	33	373	8.8%	0	2	0.0%
Brighton	16	73	21.9%	12	35	34.3%	4	38	10.5%	0	0	0.0%
Chili	13	75	17.3%	9	46	19.6%	4	29	13.8%	0	0	0.0%
Clarkson	2	21	9.5%	1	8	12.5%	1	13	7.7%	0	0	0.0%
East Rochester	1	12	8.3%	0	3	0.0%	1	9	11.1%	0	0	0.0%
Gates	7	91	7.7%	3	38	7.9%	4	53	7.5%	0	0	0.0%
Greece	11	272	4.0%	5	121	4.1%	6	151	4.0%	0	0	0.0%
Hamlin	2	26	7.7%	2	12	16.7%	0	14	0.0%	0	0	0.0%
Henrietta	10	85	11.8%	7	39	17.9%	3	46	6.5%	0	0	0.0%
Irondequoit	30	135	22.2%	15	59	25.4%	15	76	19.7%	0	0	0.0%
Mendon	2	12	16.7%	1	6	16.7%	1	6	16.7%	0	0	0.0%
Ogden	2	41	4.9%	1	21	4.8%	1	20	5.0%	0	0	0.0%
Parma	2	46	4.3%	1	27	3.7%	1	19	5.3%	0	0	0.0%
Penfield	6	69	8.7%	4	26	15.4%	2	43	4.7%	0	0	0.0%
Perinton	40	82	48.8%	19	31	61.3%	21	51	41.2%	0	0	0.0%
Pittsford	21	39	53.8%	15	28	53.6%	6	11	54.5%	0	0	0.0%
Riga	2	13	15.4%	1	4	25.0%	0	8	0.0%	1	1	100.0%
Rush	0	12	0.0%	0	5	0.0%	0	7	0.0%	0	0	0.0%
Sweden	2	29	6.9%	1	15	6.7%	1	14	7.1%	0	0	0.0%
Webster	8	82	9.8%	4	40	10.0%	4	42	9.5%	0	0	0.0%
Wheatland	0	7	0.0%	0	1	0.0%	0	6	0.0%	0	0	0.0%
TOWNS Total	177	1,222	14.5%	101	565	17.9%	75	656	11.4%	1	1	100.0%
GRAND Total	238	1,916	12.4%	129	884	14.6%	108	1,029	10.5%	1	3	33.3%

WORKING FAMILIES TURNOUT BY AGE GROUP 2023 PRIMARY ELECTION



WORKING FAMILIES TURNOUT - TOTAL AND GENDER 2023 PRIMARY ELECTION

