



Emergency Planning for the R.E. Ginna Nuclear Power Plant **Monroe County**



Important Safety Information For Your Community and Annual Needs Survey **2018/2019**

Please read the entire brochure or have someone translate it for you. Discuss this information with members of your family, and then keep the brochure in a convenient place for future use.

ESTA INFORMACIÓN ES IMPORTANTE

Por favor lea este panfleto o busque a alguien que se lo lea. Comparta esta información con su familia y mantenga este panfleto en un lugar conveniente para un uso futuro.

What to Do in an Emergency

Monitor and Prepare

Tune your radio or TV to one of the stations listed in this brochure. Monitor the radio and TV for emergency information and follow emergency instructions. People should prepare for possible evacuation (e.g., reunite with family members, assemble emergency kits, provide for pet needs, keep off of the road as much as possible).

Keep Phone Lines Open

Please do not make unnecessary phone calls. Leaving phone lines open for emergency workers will help everyone involved. If you require assistance, call the emergency phone numbers broadcast on the radio or TV.

Shelter-in-Place

Go indoors and stay there. Close all doors and windows and shut off any systems that draw in outside air, such as furnaces, fireplaces and air conditioners. Keep listening to the radio or TV for updates. Keep pets inside and shelter farm animals. If traveling in a vehicle, close windows and vents.

If Instructed to Evacuate

In an evacuation, people in the affected area will be asked to go to local reception centers listed within this brochure. After this, they can stay at specified mass care centers or with friends or relatives outside the evacuation zone.

Please do not try to pick up children or others at schools, hospitals, nursing homes or overnight campgrounds. These facilities will be following their own special emergency plans, and you would most likely miss connections. If evacuated, students, hospital patients and nursing home residents will be accompanied to relocation centers where their needs will be addressed. To find out where people are being moved, stay tuned to the radio or TV.

Plan for three days away from home, locking up and turning appliances off as you would for a weekend vacation. Pack all necessary items (See “Emergency Supplies”). Evacuate everyone in your home, following directions given on the radio or TV. These routes will have been selected as the safest ways out of the affected area.

Shadow Evacuation

Persons should only evacuate when instructed to do so. Evacuation of individuals not within the declared evacuation area could impede evacuation traffic flow. Monitor the radio or TV and prepare to follow instructions.

Staged Evacuation

You may be instructed to shelter-in-place until people in a higher risk area are evacuated. Monitor the radio or TV and prepare to follow instructions.

Information for Farmers

When advised to do so, remove all livestock from pasture, shelter if possible, and provide them with stored feed and protected water. The New York State Department of Agriculture and Markets will provide further instructions regarding the protection of livestock and foodstuffs.

School Information

In the event an evacuation is necessary during school hours, children who attend the following schools will be transported to Monroe Community College (Brighton Campus, 1000 E. Henrietta Rd.).

ERPA M-1 Schlegel Road Elementary School.

ERPA M-2 None.

ERPA M-3 None.

ERPA M-4 Spry Middle School, State Road Elementary School.

ERPA M-5 None.

ERPA M-6 Klem Road North Elementary School, Klem Road South Elementary School.

ERPA M-7 Plank Road North Elementary School, Plank Road South Elementary School, Schroeder High School, Montessori School and Wrap Around of Webster.

ERPA M-8 None.

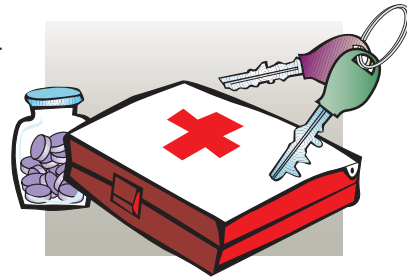
ERPA M-9 R.L. Thomas High School, Willink Middle School.

In addition to these schools, DeWitt Road School, Rochester Christian School and St. Rita's School children will also be sent to Monroe Community College. Day care centers and nursery schools will follow their own emergency procedures for contacting parents to pick up their children.

NOTE: If your ERPA has been instructed to evacuate or shelter-in-place and your children attend a school outside the 10-mile EPZ, you should contact the Webster School District for information.

How to Prepare for an Emergency

You never know when you might have to leave your home on short notice. A nuclear incident is only one possibility. Floods, fires, chemical spills or severe illness could occur at any time. Preparing now will help you respond more quickly in any emergency.



Emergency Kit

Keep an emergency kit – portable radio, flashlight, extra batteries, extra car keys, first aid kit and other items – in a special place that the whole family can easily locate. Include this booklet in your emergency kit with your location marked on the map. Write a list of the items you would want to take if you had to leave home quickly and post the list in a convenient spot. Be sure to keep a supply of all the items on your list. Gather any important documents that you might need in an emergency and keep them together in a safe place that you can access quickly and easily.

Transportation

Maintain your vehicle in good running order and keep the gas tank at least half full at all times. If you will need transportation in an emergency, use the attached reply card to notify local authorities now.

Pets

Only service animals will be permitted inside reception centers or shelters. Pets will not be allowed inside reception centers and shelters. Pet sheltering information will be available at the reception centers and shelters for your area.

Contact Monroe County Emergency Management Agency for additional information.

Access & Functional Needs Card

Emergency Assistance Questionnaire

In the event of an emergency or disaster, some residents may need assistance during evacuation and sheltering. The Office of Emergency Management maintains a voluntary registration list of individuals to make response agencies aware of those who need assistance. THIS INFORMATION WILL BE KEPT CONFIDENTIAL AND USED ONLY IN THE CASE OF AN EMERGENCY OR DISASTER. It does not guarantee the agencies will be able to provide assistance in every type of emergency. Wayne/Monroe Counties shall not be made liable for any claim based upon the good faith failure to exercise or perform a function or duty on the part of any officer or employee in carrying out a local disaster preparedness plan. If you no longer live at the address to which this form was sent, please indicate your correct address.

Name	Birthdate
Home Phone	Cell Phone
Street Address	Apt. No.
Town	Zip
Alternate Contact Person	
Relationship	
Home Phone	Work Phone
Cell Phone	

Fold Here

- I have a hearing problem and need to be notified of emergencies by phone.
- I have a TTY or TTD.
- My alternate contact can notify me of emergencies.
- Transportation needs: I have my own vehicle or someone I can ride with.
 - I require assistance to ride in a car or bus.
 - I require a bus equipped for wheelchairs. I require an ambulance.
- I have a medical problem that requires assistance in the case of an emergency:
 - Wheelchair Oxygen Dialysis
 - Vision Other: _____
 - I leave the state for a portion of each year. From: _____ To: _____

I hereby consent and pre-authorize that emergency response personnel shall be able to enter my home during search and rescue operations if necessary to ensure my safety and welfare during an emergency. I also consent to have my name placed in the county voluntary registry of individuals with access and functional needs.

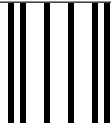
Signature: _____ Date: _____

FOR OFFICE USE ONLY

ERPA: _____ FD: _____ TOWN: _____ HI: _____ M: _____

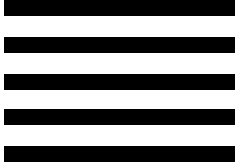
Records Update: _____

2018/2019



NO POSTAGE
NECESSARY
IF MAILED
IN THE
UNITED STATES

BUSINESS REPLY MAIL
FIRST-CLASS MAIL PERMIT NO. 2 OSWEGO, NY



POSTAGE WILL BE PAID BY ADDRESSEE

EXELON EMERGENCY PREPAREDNESS
348 LAKE ROAD
OSWEGO NY 13126-9907



Please TAPE closed here. DO NOT STAPLE.

Nuclear Power and Public Safety

Benefits and Potential Risks of Nuclear Power

Used properly, nuclear fission (the “splitting” of uranium atoms) is a safe, dependable source of electricity. It is reasonable, though, to be concerned about what might happen in the event of a serious incident at a power plant.

A power plant reactor cannot produce a nuclear explosion. The uranium fuel contains very little fissionable material. As for radiation, the complex structure of a nuclear power plant is designed to prevent the release of radiation. A serious incident, however, could allow some radiation to escape, most likely as a cloud, or “plume,” of radioactive steam that would be carried away from the plant by the wind. The degree of risk to the public would depend on the size of the plume, the direction and speed of the wind, and other factors.

Emergency Planning for the Ginna Area

Special plans have already been developed to protect the public in the event of a nuclear incident in your area. These plans give specific attention to people who – like you – live, work or visit within 10 miles of a nuclear power plant. Procedures are in place to help protect you and other members of the public in the unlikely event of a nuclear emergency. If necessary, area officials would declare an emergency and take measures to ensure public safety.

This pamphlet addresses procedures for the Ginna area. Please read and keep this material for future reference. Although it specifically addresses a potential nuclear accident, much of the information is useful in any major emergency.

Siren Testing

Warning sirens surrounding the R.E. Ginna Nuclear Power Plant are routinely tested weekly on Tuesdays at 9:30 am. Annual full sound testing is conducted on the first Tuesday of May.

Warning Sirens

Communities across the United States may use outdoor warning sirens for many purposes. Sirens are not exclusive to nuclear power facilities. Sirens are designed to warn the public of many hazards, including fires, flooding, and other events that warrant public notifications. The warning sirens for the R.E. Ginna Nuclear Power Plant EPZ, when activated, emit a four-minute steady sound. If you hear a siren, you should tune to one of the Emergency Alert System (EAS) stations listed in this brochure for official information.

Siren Malfunction

A siren may malfunction and inadvertently sound. Some indications of a siren malfunction are a siren sounding for more than five minutes, or a siren sounding with no accompanying message on the Emergency Alert System.

Siren Malfunction Contact Numbers

Report siren malfunctions to Monroe County 911 Center.

Public Inquiry Telephone Numbers

888.232.4600

Shelter-in-Place or Evacuation

Officials might recommend that people either take shelter indoors or evacuate an area. It is critically important that you follow the recommended course of action. Staying home when instructed to evacuate or driving around when urged to stay indoors could expose you to danger unnecessarily.

NOTE: If you or someone you know might not respond to warning sirens or radio broadcasts due to impaired hearing or other factors, please use the attached reply card to notify local authorities now.

Potassium Iodide (KI)

Potassium Iodide (KI) is a nonprescription drug that may prevent the thyroid from absorbing radioactive iodine. KI is one type of protective action that may be recommended during a nuclear incident. KI should only be taken at the direction of the appropriate state and local authorities. Consult your physician if you have concerns about the safety of KI for your child or yourself. KI is effective in blocking the absorption of radioactive iodine only. Since it does not block the absorption of any other radioactive material, evacuation or sheltering in place may be the most effective and preferred protective actions. Residents living within the 10-mile radius, who have not already done so, may obtain more information about KI or obtain KI by contacting:

Monroe County Office of Emergency Management
1190 Scottsville Road, Suite 200
Rochester, NY 14624
585.753.3810

Classification of Accidents

There are four accident classifications used to describe nuclear emergencies. We contact federal, state and local authorities in each of the following situations:

UNUSUAL EVENT — Events are in progress or have occurred which indicate a potential degradation of the level of safety of the plant or indicate a security threat to facility protection. No releases of radioactive material requiring off-site response or monitoring are expected unless further degradation of safety systems occurs.

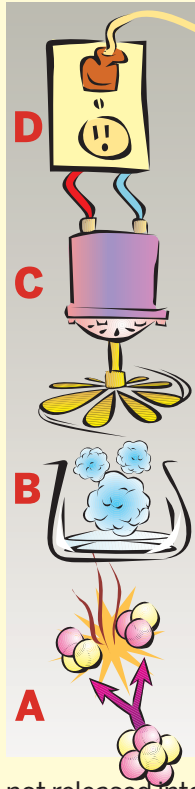
ALERT — Events are in progress or have occurred which involve an actual or potential substantial degradation of the level of safety of the plant or a security event that involves probable life threatening risk to site personnel or damage to site equipment because of intentional malicious dedicated efforts of a hostile act. Any releases are expected to be limited to small fractions of the Environmental Protection Agency (EPA) Protective Action Guideline exposure levels.

SITE AREA EMERGENCY — Events are in progress or have occurred which involve actual or likely major failures of plant functions needed for protection of the public or security events that result in intentional damage or malicious acts: (1) toward site personnel or equipment that could lead to the likely failure of or; (2) prevents effective access to equipment needed for the protection of the public. Any releases are not expected to result in exposure levels which exceed EPA Protective Action Guideline exposure levels beyond the site boundary.

GENERAL EMERGENCY — Events are in progress or have occurred which involve actual or imminent substantial core degradation or melting with potential for loss of containment integrity or security events that result in an actual loss of physical control of the facility. Releases can be reasonably expected to exceed EPA Protective Action Guideline exposure levels off-site for more than the immediate site area.

What You Need to Know About Nuclear Power Plants and Radiation

How Do Nuclear Plants Work?



Power plants create electricity by running steam turbines, which are powered either by fossil fuels – coal, oil, natural gas – or by nuclear power. Nuclear technology produces energy by splitting uranium atoms in a process called fission. (A) Fission generates heat that (B) boils water for the steam that runs the (C) turbines, which produce the (D) electricity that we all use – making, for instance, (E) toast for breakfast.

In a nuclear power plant, pea-sized uranium pellets are stacked inside long, thin fuel rods, which are grouped in “assemblies” inside a reactor “core.” The core is encased in a very thick steel capsule, and the entire reactor is further protected by an airtight steel and concrete building called a “containment.” This complex structure is designed to help ensure the safe utilization of nuclear power.

How Do We All Benefit From Nuclear Power?

Any fuel used to produce energy also produces waste. By-products of coal-burning include smoke, ashes and slag. Even with the latest technologies, it is impossible to prevent some of this waste from reaching the environment outside the power plant. Nuclear power generation, on the other hand, produces waste primarily in the form of spent fuel, which is not released into the environment. Besides helping to protect the environment, nuclear energy is also highly efficient, producing vastly more energy for its weight than coal or oil. We would have to burn more than 120 gallons of oil or up to a ton of coal to produce the same amount of energy as that found in a single pellet of uranium.

What Is Radiation?

Radiation is energy in the form of rays or particles. Some atoms – the ones we call radioactive – are unstable. As they go through a natural process called “decay” in which they change into a stable atom, they throw off rays or particles called radiation. Radiation is exactly the same, whether from nature, or medical or industrial activities.

Radiation is measured in millirems. On average, a person receives about 300 millirem of radiation annually from natural sources and another 300 millirem or so from X-rays and other medical procedures. It takes more than 35 times this much — over 20,000 millirem in a single day — to produce identifiable effects in the body. Federal regulations allow workers to receive up to 5,000 millirem of radiation in the course of a year’s work.

For More Information, Please Visit:

www.monroecounty.gov

www.nei.org

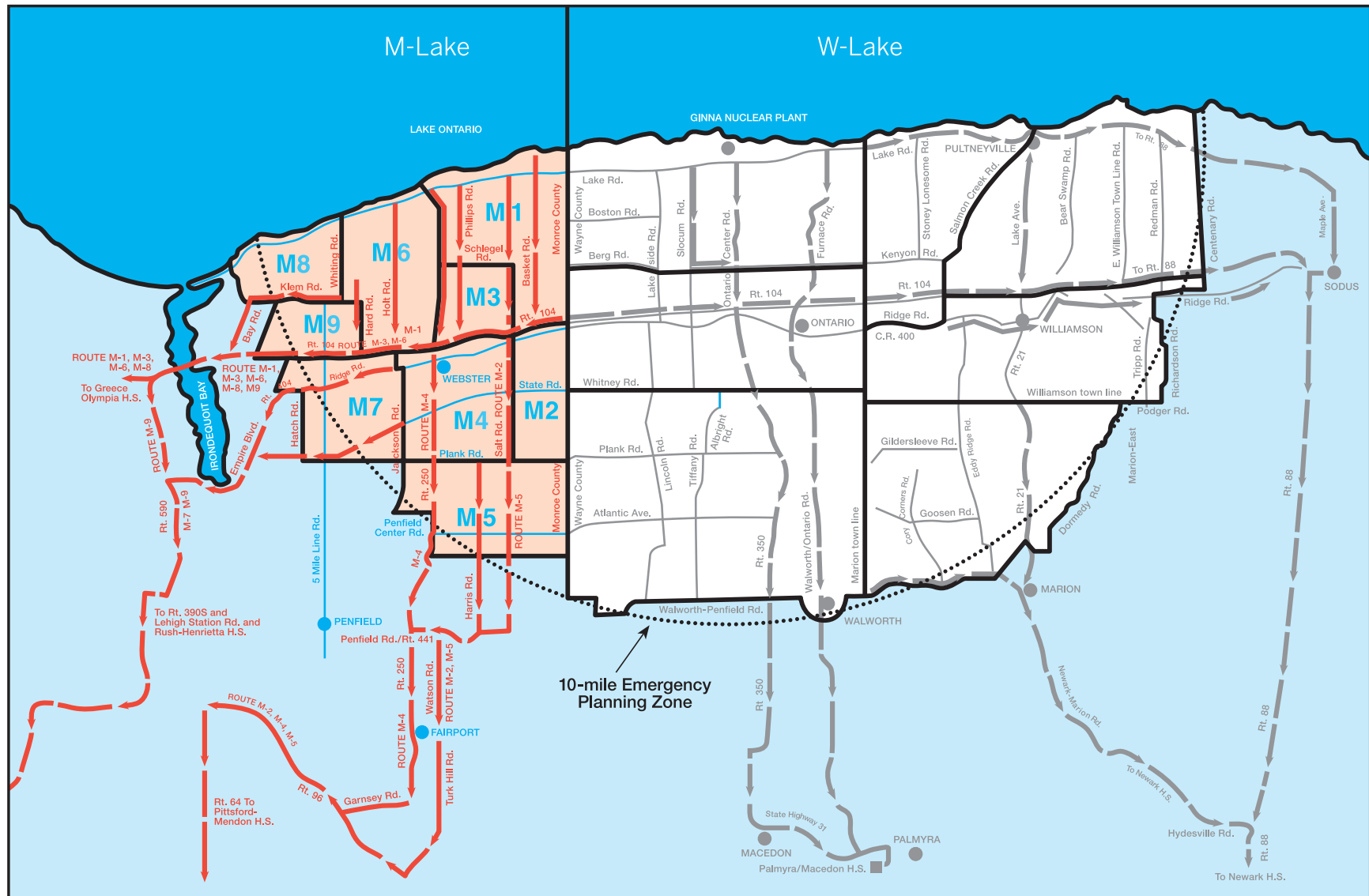
www.dhSES.ny.gov

www.hps.org/publicinformation/Radterms

www.nrc.gov

www.emergency.cdc.gov/radiation

Monroe County Emergency Response Planning Areas (ERPAs)



Monroe County Emergency Response Planning Areas (ERPAs)

In the Monroe County Radiological Emergency Preparedness Plan, the northeast portion of the county has been divided into ten Emergency Response Planning Areas (ERPAs). The following describes the ERPAs and the evacuation routes to the Monroe County Reception/Congregate Care Centers.

ERPA M-1

Comprised of that section of the Town of Webster bounded on the north by Lake Ontario, on the east by the Monroe-Wayne County Line, to Route 104 on the south; to Salt Road north to Schlegel Road west to Route 250, north to Lake Ontario.

Evacuation Route for ERPA M-1

South on Basket Road, or Salt Road, or Phillips Road, or Route 250 to Route 104, west on Route 104 to Fetzner Road, north on Fetzner Road to Maiden Lane, east on Maiden Lane to Greece Olympia High School, 1139 Maiden Lane.

ERPA M-2

Comprised of that section of the Town of Webster and the Town of Penfield bounded on the north by Route 104, on the east by the Monroe-Wayne County Line, on the south by Plank Road, and on the west by Salt Road.

Evacuation Route for ERPA M-2

South on Salt Road to Route 441, west on Route 441 to Watson Road, south on Watson Road to Turk Hill Road to Route 96, north on Route 96 to Route 64, south on Route 64 to Pittsford-Mendon High School, 472 Mendon Road.

ERPA M-3

Comprised of that section of the Town of Webster bounded on the north by Schlegel Road, on the east by Salt Road, on the south by Route 104, and on the west by Route 250.

Evacuation Route for ERPA M-3

South on Salt Road, Phillips Road or Route 250 to Route 104, west on Route 104 to Fetzner Road, north on Fetzner Road to Maiden Lane, east on Maiden Lane to Greece Olympia High School, 1139 Maiden Lane.

Evacuation Route for Xerox

Route 104 west to Route 590, and then dispersion to private homes (this route pertains to Xerox workers).

ERPA M-4

Comprised of that section of the Town of Webster and the Town of Penfield bounded on the north by Route 104, on the east by Salt Road, on the south by Plank Road, and on the west by both Jackson and Holt Roads.

Evacuation Route for ERPA M-4

South on Route 250 through the Village of Fairport to Garnsey Road, west on Garnsey Road to Route 96, north on Route 96 to Route 64, south on Route 64 to Pittsford-Mendon High School, 472 Mendon Road.

ERPA M-5

Comprised of that section of the Town of Penfield bounded on the north by Plank Road, on the east by the Monroe-Wayne County Line, on the south by Sweets Corners Road, and on the west by Route 250, Penfield Center Road and Jackson Road to Plank Road.

Evacuation Route for ERPA M-5

South on Salt Road to Route 441, west on Route 441 to Watson Road, south on Watson Road to Turk Hill Road to Route 96, north on Route 96 to Route 64, south on Route 64 to Pittsford-Mendon High School, 472 Mendon Road.

ERPA M-6

Comprised of that section of the Town of Webster bounded on the north by Lake Ontario, on the east by Route 250, on the south by Route 104, and on the west by Hard, Klem and Whiting Roads.

Evacuation Route for ERPA M-6

South on Route 250, or Holt Road, or Hard Road to Route 104, west on Route 104 to Fetzner Road, north on Fetzner Road to Maiden Lane, east on Maiden Lane to Greece Olympia High School, 1139 Maiden Lane.

ERPA M-7

Comprised of that section of the Town of Webster and the Town of Penfield bounded on the north by Route 104, on the east by both Jackson and Holt Roads, on the south by Plank Road and on the west by Hatch Road to Ridge Road to Gravel Road.

Evacuation Route for ERPA M-7

South on State Road to Plank Road, west on Plank Road to Route 404, west on Route

404 to Route 590, south on Route 590 to Route 390, south on Route 390 to Lehigh Station Road, east on Lehigh Station Road to Rush-Henrietta Senior High School, 1799 Lehigh Station Road.

ERPA M-8

Comprised of that section of the Town of Webster bounded on the north by Lake Ontario, on the east by Whiting Road, on the south by Klem Road, and on the west by Bay Road.

Evacuation Route for ERPA M-8

South to Klem Road, west on Klem Road to Bay Road, south on Bay Road to Route 104, west on Route 104 to Fetzner Road, north on Fetzner Road to Maiden Lane, east on Maiden Lane to Greece Olympia High School, 1139 Maiden Lane.

ERPA M-9

Comprised of that section of the Town of Webster bounded on the north by Klem Road, on the east by Hard Road, on the south by Route 104, and on the west by Maple Drive.

Evacuation Route for ERPA M-9

West on Route 104 to Route 590, south on Route 590 to Route 390, south on Route 390 to Lehigh Station Road, east on Lehigh Station Road to Rush-Henrietta Senior High School, 1799 Lehigh Station Road.

ERPA M-Lake

Monroe County Lake Ontario portion of 10-mile EPZ.

Emergency Supplies

- General first aid kit and any special medication
- Cash, credit, or ATM cards
- Important documents
- Change of clothing
- Personal health products
(toothbrush, eye care, sanitary products, etc.)
- Baby formula, diapers, car seat, toys
- Special dietary foods
- Pet related supplies



Emergency Bus Pickup Plan

If you are advised to evacuate (this could be just one ERPA of the EPZ) and you do not have transportation, check your closest bus pickup point below. Carry as little baggage as possible (preferably one piece), place a tag on it which includes your name, address and phone number, and then walk to the bus pickup point to wait for transportation to the Reception Center designated for your ERPA. Animals, except guide or service dogs, will not be permitted on the bus unless confined in a carrier.

ERPA M-1

Your Reception/Congregate Care Center is Greece Olympia High School.

Bus pickup points in ERPA M-1:

- Basket Rd. and Lake Rd.
- Basket Rd. opposite Sandy La.
- Basket Rd. and Schlegel Rd.
- Basket Rd. and Tebor Rd.
- Basket Rd. and Woodard Rd.
- Lake Rd. and Basket Rd.
- Lake Rd. and Monroe-Wayne Cty. Line Rd.
- Lake Rd. and Phillips Rd.
- Lake Rd. opposite Phillips Rd.
- Lake Rd. opposite Webster Rd. (Rt. 250)
- Monroe-Wayne Cty. Line Rd. opposite Boston Rd.
- Monroe-Wayne Cty. Line Rd. and Woodard Rd.
- Monroe-Wayne Cty. Line Rd. and Schlegel Rd.
- Monroe-Wayne Cty. Line Rd. and Rt. 104
- Phillips Rd. opposite Fieldcrest Dr.
- Phillips Rd. and Robin Hood La. S.
- Phillips Rd. and Robin Hood La. N.
- Phillips Rd. and Schlegel Rd.
- Salt Rd. opposite Bridgeboro Dr.
- Salt Rd. opposite Greenboro Dr.
- Salt Rd. and Lake Rd.
- Salt Rd. and Woodard Rd.
- Schlegel Rd. and Basket Rd.
- Schlegel Rd. and Salt Rd.
- Schlegel Rd. and Shallow Creek Tr.
- Webster Rd. (Rt. 250) and Akers Mill Rise
- Webster Rd. (Rt. 250) and Lake Point Dr.
- Webster Rd. (Rt. 250) and Meadowwood Dr.
- Webster Rd. (Rt. 250) and Sagebrook Way
- Webster Rd. (Rt. 250) and Wildflower Dr.
- Webster Rd. (Rt. 250) and Woodhull Rd.
- Woodard Rd. and Basket Rd.
- Woodard Rd. and Salt Rd.

ERPA M-2

Your Reception/Congregate Care Center is Pittsford-Mendon High School.

Bus pickup points in ERPA M-2:

- Monroe-Wayne Cty. Line Rd. and Foxworth La.
- Monroe-Wayne Cty. Line Rd. and Haley Rd.
- Monroe-Wayne Cty. Line Rd. and State Rd.
- Monroe-Wayne Cty. Line Rd. opposite State Rd.
- Monroe-Wayne Cty. Line Rd. opposite Vande Rd.
- Monroe-Wayne Cty. Line Rd. and Whitney Rd.
- Plank Rd. and Hogan Rd.
- Plank Rd. and Monroe-Wayne Cty. Line Rd.
- Ridge Rd. opposite Monroe-Wayne Cty. Line Rd.
- Ridge Rd. and Monroe-Wayne Cty. Line Rd.
- Salt Rd. and Hermance Rd.
- Salt Rd. and Plank Rd.
- Salt Rd. and Ridge Rd.
- State Rd. and Salt Rd.

ERPA M-3

Your Reception/Congregate Care Center is Greece Olympia High School.

Bus pickup points in ERPA M-3:

- Klem Rd. and Phillips Rd.
- North Ave. (Rt. 250) and Commercial St.
- North Ave. (Rt. 250) and Kittelberger Park
- North Ave. (Rt. 250) and Orchard St.
- North Ave. (Rt. 250) and Railroad St.
- Phillips Rd. and Rt. 104
- Phillips Rd. and Chiyoda Dr.
- Phillips Rd. and Orchard St.
- Salt Rd. and Micheldean Rd.
- Salt Rd. and Schlegel Rd.
- Salt Rd. and Salt Rd. Exit (Rt. 104)
- Schlegel Rd. and Phillips Rd.
- Schlegel Rd. and Webster Rd. (Rt. 250)
- Webster Rd. (Rt. 250) and Klem Rd.
- Webster Rd. (Rt. 250) and Mill Creek Run
- Webster Rd. (Rt. 250) and Wall Rd.

ERPA M-4

Your Reception/Congregate Care Center is Pittsford-Mendon High School.

Bus pickup points in ERPA M-4:

- Fairport Nine Mile Pt. Rd. (Rt. 250) and State Rd.
- Fairport Nine Mile Pt. Rd. (Rt. 250) and Marchner Rd.
- Harris Rd. opposite Hermance Rd.
- Harris Rd. and Marchner Rd.
- Harris Rd. and Plank Rd.
- Harris Rd. and State Rd.
- Holt Rd. and Rt. 104
- Holt Rd. and Ridge Rd.
- Jackson Rd. opposite Angean Dr.
- Jackson Rd. and Jackson Hgts. Dr.
- Jackson Rd. and Plank Rd.
- Jackson Rd. and Ridge Rd.
- Jackson Rd. and Stonegate Rd.
- Main St. and Corning Pk.
- Main St. and Curtice Pk.
- Main St. and Dunning Ave.
- Main St. and Lapham Pk.
- Main St. and Phillips Rd.
- Main St. and Pierce St.
- Main St. and Sherwood Ave.
- Main St. and South Ave. (Rt. 250)
- Marchner Rd. and Harris Rd.
- North Ave. (Rt. 250) and Rt. 104
- North Ave. and Reynolds Rd.
- Phillips Rd. and Champion Ave.
- Phillips Rd. opposite Country Manor Way
- Phillips Rd. and Foster Dr.
- Phillips Rd. and Hefner Dr.
- Phillips Rd. and Krieger Rd. N.
- Phillips Rd. and Krieger Rd. S.
- Phillips Rd. and Ridge Rd.
- Phillips Rd. and State Rd.
- Plank Rd. and Fairport Nine Mile Pt. Rd. (Rt. 250)
- Plank Rd. and Salt Rd.
- Plank Rd. and Stablegate Dr.
- Ridge Rd. and Ebner Dr.
- Ridge Rd. and Holt Rd.
- Ridge Rd. opposite Holy Trinity Church
- Ridge Rd. and Jackson Rd.
- Ridge Rd. and Phillips Rd.
- Ridge Rd. and Salt Rd.
- Salt Rd. opposite Hermance Rd.
- Salt Rd. and State Rd.
- South Ave. (Rt. 250) and Clover Dr.
- South Ave. (Rt. 250) and Dunning Ave.
- South Ave. (Rt. 250) opposite Dunning Ave.
- South Ave. (Rt. 250) and Fuller Ave.
- South Ave. (Rt. 250) and Main St.
- South Ave. (Rt. 250) and Park Ave.
- South Ave. (Rt. 250) opposite Pontiac St.
- South Ave. (Rt. 250) and Pontiac St.
- South Ave. (Rt. 250) and Sanford St.
- South Ave. (Rt. 250) and State Rd.
- State Rd. and Christy La.
- State Rd. and Fawnwood Dr.
- State Rd. and Frawley Dr.
- State Rd. opposite Harris Rd.
- State Rd. and Harris Rd.
- State Rd. and Iroquois St.
- State Rd. and Jackson Rd.
- State Rd. and Lincolnshire Rd.
- State Rd. and Phillips Rd.
- State Rd. and South Ave. (Rt. 250)

ERPA M-5

Your Reception/Congregate Care Center is Pittsford-Mendon High School.

Bus pickup points in ERPA M-5:

- Allen Rd. and Fairport Nine Mile Pt. Rd. (Rt. 250)
- Allen Rd. and Harris Rd.
- Atlantic Ave. (Rt. 286) and Fairport Nine Mile Pt. Rd. (Rt. 250)
- Atlantic Ave. (Rt. 286) opposite Gloria Dr.
- Atlantic Ave. (Rt. 286) and Harris Rd.
- Atlantic Ave. (Rt. 286) and Salt Rd.
- Fairport Nine Mile Pt. Rd. (Rt. 250) and Atlantic Ave. (Rt. 286)
- Fairport Nine Mile Pt. Rd. (Rt. 250) and Northrup Rd.
- Fairport Nine Mile Pt. Rd. (Rt. 250) and Penfield Center Rd.
- Fairport Nine Mile Pt. Rd. (Rt. 250) and Sweets Corners Rd.
- Gloria Dr. and Atlantic Ave. (Rt. 286)
- Harris Rd. and Allen Rd.
- Harris Rd. and Atlantic Ave. (Rt. 286)
- Harris Rd. opposite Kennedy Rd.
- Harris Rd. opposite Penfield Center Rd.
- Harris Rd. and Penfield Center Rd.
- Harris Rd. and Sweets Corners Rd.
- Hogan Rd. and Kennedy Rd.
- Jackson Rd. opposite Northrup Rd.
- Jackson Rd. and Penfield Center Rd.
- Jackson Rd. and Plank Rd.
- Kennedy Rd. and Harris Rd.
- Kennedy Rd. opposite Hogan Rd.
- Kennedy Rd. and Monroe-Wayne Cty. Line Rd.
- Kennedy Rd. and Salt Rd.
- Monroe-Wayne Cty. Line Rd. and Atlantic Ave. (Rt. 286)
- Monroe-Wayne Cty. Line Rd. and Kennedy Rd.
- Monroe-Wayne Cty. Line Rd. and Knollwood Dr.
- Monroe-Wayne Cty. Line Rd. and Sweets Corners Rd.
- Northrup Rd. and Jackson Rd.
- Northrup Rd. and Fairport Nine Mile Pt. Rd. (Rt. 250)
- Penfield Center Rd. and Fairport Nine Mile Pt. Rd. (Rt. 250)
- Penfield Center Rd. opposite Renwick's Run
- Plank Rd. and Fairport Nine Mile Pt. Rd. (Rt. 250)
- Plank Rd. and Harris Rd.
- Plank Rd. and Hogan Rd.
- Plank Rd. and Monroe-Wayne Cty. Line Rd.
- Plank Rd. and Salt Rd.
- Salt Rd. and Atlantic Ave. (Rt. 286)

- Salt Rd. and Kennedy Rd.
- Salt Rd. and Plank Rd.
- Salt Rd. and Sweets View Dr.
- Sweets Corners Rd. and Dublin Rd.
- Sweets Corners Rd. and Gloria Dr.
- Sweets Corners Rd. and Harris Rd.
- Sweets Corners Rd. and Salt Rd.
- Sweets Corners Rd. and Sweets View Dr.

ERPA M-6

Your Reception/Congregate Care Center is Greece Olympia High School.

Bus pickup points in ERPA M-6:

- Hard Rd. opposite Cannon Cir.
- Hard Rd. opposite Copper Kettle Dr.
- Hard Rd. and Klem Rd.
- Hard Rd. opposite Little Bardfield Rd.
- Hard Rd. and Peartree La.
- Hard Rd. and Picture Pkwy.
- Hard Rd. opposite Publishers Pkwy.
- Hard Rd. and Shoemaker Rd.
- Herman Rd. and Pellett Rd.
- Holt Rd. and Brooktree La.
- Holt Rd. and Brown Dr.
- Holt Rd. opposite Hidden Valley Tr.
- Holt Rd. and Hidden Valley Tr.
- Holt Rd. and Hrezent View La.
- Holt Rd. and John Glenn Blvd.
- Holt Rd. and Klem Rd.
- Holt Rd. and Lake Rd.
- Holt Rd. and Larkston Dr.
- Holt Rd. and Nestwood La.
- Holt Rd. opposite Orchard Rd.
- Holt Rd. and Rt. 104
- Holt Rd. and Severn Ridge
- Holt Rd. and Sherborne Rd.
- Holt Rd. and Shoemaker Rd.
- Holt Rd. and Wall Rd.
- Holt Rd. and Woodbridge La.
- Holt Rd. opposite Woodhull Rd.
- Holt Rd. and Woodhull Rd.
- Holt Rd. and Woodsboro Farms
- Klem Rd. opposite Applegrove Cir.
- Klem Rd. and Applegrove Cir.
- Klem Rd. and Hard Rd.
- Klem Rd. and Holt Rd.
- Klem Rd. opposite Shadow Wood La.
- Klem Rd. and Shadow Wood La.
- Klem Rd. and Stafford Cres. (West end)
- Klem Rd. and Webster Rd. (Rt. 250)
- Klem Rd. opposite Willow La.
- Klem Rd. and Willow La.
- Lake Rd. opposite Baker Rd.

- Lake Rd. opposite Bittersweet La.
- Lake Rd. opposite Burnett Rd.
- Lake Rd. and Holt Rd.
- Lake Rd. opposite Pellett Rd.
- Lake Rd. opposite Whiting Rd.
- Lake Rd. and Whiting Rd.
- North Ave. (Rt. 250) and Donovan St.
- North Ave. (Rt. 250) and May St.
- North Ave. (Rt. 250) and Orchard St.
- Pellett Rd. and Lake Rd.
- Pellett Rd. and Shangri-La Lane
- Rt. 104 and North Ave. (Rt. 250)
- Shoemaker Rd. and Holt Rd.
- Shoemaker Rd. opposite Licia La.
- Shoemaker Rd. opposite Notre Dame Dr.
- Shoemaker Rd. opposite Sherborne Rd.
- Shoemaker Rd. and Van Alstyne Rd.
- Shoemaker Rd. and Whiting Rd.
- Wall Rd. and 1207 Wall Rd.
- Wall Rd. and Webster Rd. (Rt. 250)
- Webster Rd. (Rt. 250) opposite Imperial Dr.
- Webster Rd. (Rt. 250) and Klem Rd.
- Webster Rd. (Rt. 250) and Lake Rd.
- Webster Rd. (Rt. 250) opposite Lake Point Dr.
- Webster Rd. (Rt. 250) and Lakeville La.
- Webster Rd. (Rt. 250) opposite Mill Creek Run
- Webster Rd. (Rt. 250) and Neubrand Rd.
- Webster Rd. (Rt. 250) and Schlegel Rd.
- Webster Rd. (Rt. 250) opposite Wildflower Dr.
- Webster Rd. (Rt. 250) opposite Woodhull Rd.
- Whiting Rd. and Shoemaker Rd.
- Hatch Rd. opposite Eastwood Cir.
- Hatch Rd. and Knobel Dr.
- Hatch Rd. opposite Mont Vista La.
- Hatch Rd. opposite Pewter Rock
- Hatch Rd. and Plank Rd.
- Hatch Rd. at Ridge Rd.
- Hatch Rd. opposite Sugar Creek Tr.
- Jackson Rd. and Alden Glen Dr.
- Jackson Rd. and Angean Dr.
- Jackson Rd. opposite Silvercrest Dr.
- Jackson Rd. and State Rd.
- Jackson Rd. and Wickerton La.
- Kayleigh Dr. and Gravel Rd.
- Old Ridge Rd. and Gravel Rd.
- Plank Rd. and Five Mile Line Rd.
- Plank Rd. and Jackson Rd.
- Plank Rd. and Shoecraft Rd.
- Ridge Rd. and Empire Blvd.
- Ridge Rd. and Five Mile Line Rd.
- Ridge Rd. opposite Hatch Rd.
- Ridge Rd. opposite Holt Rd
- Ridge Rd. and Jackson Rd.
- Ridge Rd. and Jaclyn La.
- Ridge Rd. opposite Schroeder High School
- Ridge Rd. and Webster Commons
- Shoecraft Rd. opposite Green Pine La.
- Shoecraft Rd. and Linden Tree La.
- Shoecraft Rd. and Meadow Ridge La.
- Shoecraft Rd. and Old Way Dr.
- Shoecraft Rd. and Ridge Rd.
- Shoecraft Rd. and State Rd.
- Shoecraft Rd. and Summit Knolls Dr.
- State Rd. and Alpine Dr.
- State Rd. and Misty Tr.
- State Rd. and Plank Rd.
- State Rd. and Shoecraft Rd.

ERPA M-7

Your Reception/Congregate Care Center is Rush-Henrietta Senior High School.

Bus pickup points in ERPA M-7:

- Cardile Rd. and Kayleigh Dr.
- Five Mile Line Rd. and Buttermilk Cir.
- Five Mile Line Rd. and Friar Tuck La.
- Five Mile Line Rd. and Jaclyn La.
- Five Mile Line Rd. opposite Lauren Ct.
- Five Mile Line Rd. and Ridge Rd.
- Five Mile Line Rd. and Rose Bud Tr.
- Five Mile Line Rd. opposite Westwood Tr.
- Five Mile Line Rd. and Winifred Dr.
- Gravel Rd. opposite Adeline Dr
- Gravel Rd. and Adeline Dr.
- Gravel Rd. and Hickory La.
- Gravel Rd. and Mura La.
- Gravel Rd. and Old Ridge Rd.
- Hard Rd. and Ridge Rd.
- Hatch Rd. and Anytrell Dr.

ERPA M-8

Your Reception/Congregate Care Center is Greece Olympia High School.

Bus pickup points in ERPA M-8:

- Adams Rd. opposite Adams Valley
- Adams Rd. and Apple Orchard La.
- Adams Rd. and Backus Rd.
- Adams Rd. and Covewood Blvd.
- Adams Rd. and Pineview Dr.
- Backus Rd. and Bay Rd.
- Baker Rd. and Vosburg Rd.
- Bay Rd. and Apple Orchard La.
- Bay Rd. and Backus Rd.
- Bay Rd. and Hollywood Blvd.
- Bay Rd. and Lake Rd.
- Bay Rd. and Sunhill La.
- Drumm Rd. opposite Herman Rd.
- Drumm Rd. and Klem Rd.
- Drumm Rd. and Old Woods Rd.
- Drumm Rd. and Vosburg Rd.
- Herman Rd. and Drumm Rd.
- Herman Rd. and Pellett Rd.
- Herman Rd. and Wild Mallard Tr.
- Klem Rd. and Bay Rd.
- Klem Rd. opposite Contempri Way
- Klem Rd. opposite E. Glenview Ct
- Klem Rd. and Gravel Rd.
- Klem Rd. opposite Ivy Woods Cir.
- Klem Rd. and Jennifer La.
- Klem Rd. and Maple Dr.
- Lake Rd. and Baker Rd
- Lake Rd. and Fairview Cir.
- Lake Rd. opposite Forest Lawn Rd.
- Lake Rd. and Lake View Terr.
- Lake Rd. and Stoney Creek Run
- Lake Rd. and Vineyard Rd.
- Lake Rd. and Vosburg Rd.
- Van Alstyne Rd. and Klem Rd.
- Van Alstyne Rd. and Shoemaker Rd.
- Vosburg Rd. and Baker Rd.
- Vosburg Rd. and Forest Dr.

ERPA M-9

Your Reception/Congregate Care Center is Rush-Henrietta Senior High School.

Bus pickup points in ERPA M-9:

- Five Mile Line Rd. and Lindsey Circle
- Five Mile Line Rd. and Hawthorne Pl.
- Five Mile Line Rd. and Somerdale Dr.
- Five Mile Line Rd. opposite Woodcock Dr.
- Five Mile Line Rd. opposite Independence Dr.
- Five Mile Line Rd. opposite Partridge La.
- Gravel Rd. and 751 Gravel Rd.
- Gravel Rd. and Klem Rd.
- Gravel Rd. opposite Middlebury Rd.
- Gravel Rd. opposite Regina Dr. (before overpass)
- Hard Rd. and Klem Rd.
- Hard Rd. opposite Little Bardfield Rd.
- Hard Rd. and Picture Pkwy.
- Klem Rd. and Brookville Dr.
- Klem Rd. opposite Drumm Rd.
- Klem Rd. and Five Mile Line Rd.
- Klem Rd. opposite Five Mile Line Rd.
- Klem Rd. and Gravel Rd.
- Klem Rd. opposite Joylene Dr.
- Klem Rd. opposite Van Alstyne Rd.
- Maple Dr. and Alcap Dr.
- Maple Dr. and Jondor Dr.
- Maple Dr. and Klem Rd.
- Maple Dr. and 706 Maple Dr.
- Publishers Pkwy. and Five Mile Line Rd.
- Publishers Pkwy. and Hard Rd.

Keep listening to your radio or TV for the latest information and instructions. Remain calm. Do not rush.

Emergency Alert System

The **Emergency Alert System** will provide you with official information in cases of tornadoes, floods, nuclear plant accidents or other emergencies. Turn on your radio or TV for official information and instructions.

Emergency Alert Stations

AM

WHAM 1180

FM

WDVI 100.5

TV

WHEC Channel 10

Additional Information

During normal business hours:

Monroe County Office of Emergency Management

1190 Scottsville Road, Suite 200
Rochester, NY 14624
585.753.3810

*For the hearing-impaired, the
following telecommunications
device number is available:*
585.753.8200

New York State Disaster Preparedness Commission

Public Information Officer
State Office of Emergency
Management
State Campus
Building #22, Suite 101
1220 Washington Avenue
Albany, NY 12226-2251
518.292.2311

R.E. Ginna Nuclear Power Plant Community Relations

1503 Lake Road
Ontario, NY 14519-9364
315.791.5402

HYPER-REACH

As a backup plan to the Ginna sirens, your home phone number could be called by Monroe County's Hyper-Reach alerting system. You do not need to register your home number. However, you do need to register online if you would like your cellular phone to be notified as well. To register online, please go to www.monroecounty.gov and click on 911 Cell Phone Registration.

Exelon Corporation

www.exeloncorp.com



@ExelonGen

www.exeloncorp.com/reginna



Reception Center Locations

Greece Olympia High School

1139 Maiden Lane
Rochester, NY 14615

Rush-Henrietta Senior High School

1799 Lehigh Station Rd
Henrietta, NY 14467

Pittsford-Mendon High School

472 Mendon Rd
Pittsford, NY 14534